



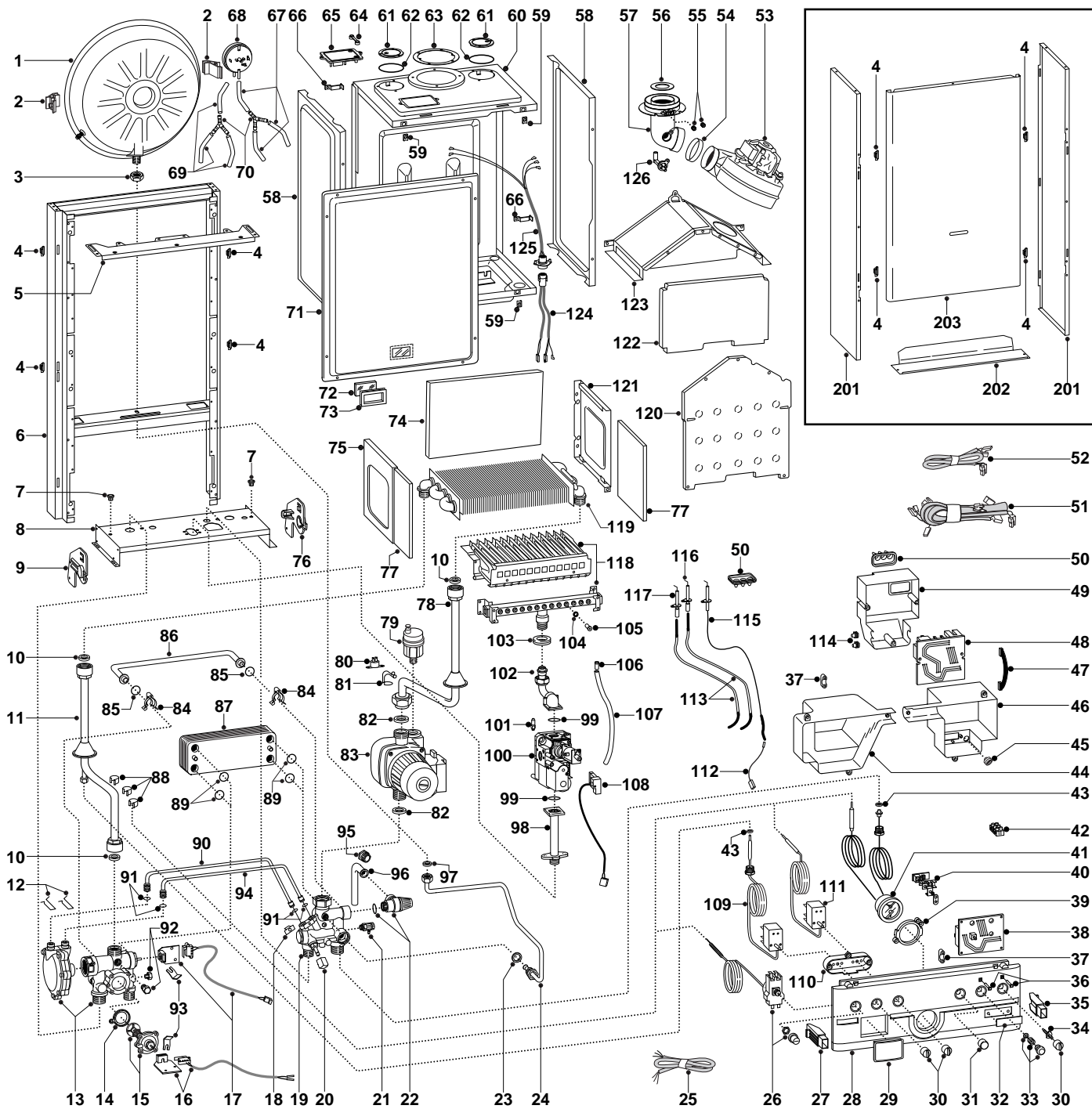
SPARE PARTS EXPLODED VIEW
GAS WALL BOILERS

Models

AT 23 MFFI

Edition 1 of 27 September 2002





EP2002210031601001

MODELS	CHARACTERISTICS	SERIAL NO: VALIDITY	REF.
AT 23 MFFI	METHANE	2320220500001	A

PART.	CODE	DESCRIPTION	REF.	NOTE
1	573294	Expansion vessel		
2	999679	Expansion vessel insert		
3	573244	3/8" lock nut		
4	574302	Casing support bracket (Plastic) (4 pcs)		
5	572984	Casing support bracket		
6	-----	Frame		11
7	570772	Cable holder		
8	-----	Hydraulic group support		11
9	998042	Hydraulic support bracket (L/H)		
10	573520	Gasket 3/4" (25 pcs)		
11	997744	Pipe (main exchanger - 3 way group)		
12	573809	Spring (water venturi) (5 pcs)		
13	998069	3-way pressure gauge valve group		
14	571547	Diaphragm (main flow switch)		
15	997713	Main flow switch		
16	998060	Microswitch (C.H./D.H.W.)		
17	998100	Microswitch (complete)		
18	571838	Pipe fixing clip (20 pcs)		
19	998071	Return group		
20	571559	Filling cock knob		
21	573727	Drain valve		
22	573172	Safety valve (1/2" 3 bar)		
23	573528	Gasket 1/2" (25 pcs)		
24	573311	Pipe (expansion vessel)		
25	998012	Cable (power supply)		
26	571829	Thermostat (overheat)		
27	997753	Control panel bracket holder (L/H)		
28	997750	Control panel		
29	997745	Timer opening cover		
30	572963	Regulation knob		
31	997717	Plastic cover		
32	997824	Name badge (plastic)		
33	998062	Release push button kit		
34	998061	Rotative extension switch		
35	997752	Control panel bracket holder (R/H)		
36	997714	L.E.D. (power indicator)		
37	571562	Cable clamp		
38	953860	Printed circuit board (ET C-MI/FFI)		
39	572895	Temperature/pressure gauge fixing ring		
40	-----	Terminal board		11
41	571832	Pressure/temperature gauge		
42	573091	Terminal board (three pole)		
43	569390	Gasket 1/4" (25 pcs)		
44	997746	Thermostat cover		
45	569458	Cable holders silicone D.2		
46	997747	Power cover		
47	997731	Cable (P.C.B.)		
48	993332	Plastic cover + signal lamp		
49	997748	P.C.B. cover		
50	998147	Ignition electrode cable rubber		
51	998102	High voltage wiring		
52	996062	Wiring (anti-frost control)		
53	998807	Fan		
54	573343	Gasket (fan inlet)		
55	573326	Flue intake plug		
56	998087	Coaxial diaphragm		
57	573333	Flue (exhaust manifold / header)		
58	573247	Panel (sealed chamber - side)		
59	570717	Spring (fastening) (5 pcs)		
60	-----	Sealed chamber		11
61	573330	Air return cover		
62	573865	Flue gasket		
63	573337	Gasket (flue manifold) (5 pcs)		
64	573329	Pressure intake cover		
65	997203	Support plate (air pressure switch)		

ER2002210031601001

PART.	CODE	DESCRIPTION	REF.	NOTE
66	998108	Cable clamp		
67	569662	Silicone pipe		
68	571653	Air pressure switch		
69	996423	Silicone pipe		
70	573327	"Y" piece (air pressure)		
71	573344	Panel (front - sealed chamber)		
72	998075	Sight glass		
73	998076	Gasket (sight glass)		
74	998132	Insulation panel (rear)		
75	573243	Panel (L/H - combustion chamber)		
76	998041	Hydraulic support bracket (R/H)		
77	998128	Insulation panel (side)		
78	996030	Pipe (pump - main exchanger)		
79	564254	Auto air vent		
80	570760	Thermostat (anti-frost)		
81	999557	Fixing spring anti-frost thermo. (5 pcs)		
82	569387	Gasket 1" (25 pcs)		
83	997150	Pump		
84	998064	Spring (by-pass pipe) (10 pcs)		
85	998077	O-ring gasket (20 pcs)		
86	998065	By-pass pipe		
87	571646	Secondary exchanger (p-type 23kW)		
88	571565	Fixing spring (pressure gauge) (10 pcs)		
89	573825	O-Ring (secondary exchanger) (10 pcs)		
90	573086	Pipe (main flow switch - positive signal)		
91	571807	O-Ring (20-18) (10 pcs)		
92	570615	1/8" Brass plug		
93	573824	Bracket (m/flow microswitch) (20 pcs)		
94	573087	Pipe (main flow switch - negative signal)		
95	998567	Nut (pipe - safety valve)		
96	573176	Pipe (safety valve outlet)		
97	573521	Gasket 3/8" (25 pcs)		
98	997202	Pipe (gas inlet)		
99	571965	O-Ring (20 pcs)		
100	571425	Gas valve		
101	573793	Intake (pressure - control valve)		
102	573289	Pipe (gas valve/burner)		
103	569443	Silicone seal		
104	572138	Burner jet washer (20 pcs)		
105	570248	Burner jet (NG 1.25) (10 pcs)		
106	573325	Rivet (20 pcs)		
107	573576	Compensation tube		
108	998052	Cable (gas valve operator)		
109	997723	Thermostat (D.H.W.)		
110	997751	Thermostat support		
111	571830	Thermostat (central heating)		
112	998058	Cable (detection electrode/P.C.B.)		
113	569503	Ignition electrode cable		
114	569720	Blind grommet		
115	573441	Electrode (Detection)		
116	569560	Electrode (Ignition R.H.)		
117	569561	Electrode (Ignition L.H.)		
118	996418	Burner 13 ramp (N.G.)		
119	998138	Main exchanger		
120	997766	Panel (front - combustion chamber)		
121	573242	Panel (R/H - combustion chamber)		
122	998131	Insulation panel (front)		
123	997767	Flue hood (sealed chamber)		
124	998971	Cable (P.C.B./fan/air pressure switch)		
125	998970	Ventilator-pressure gauge cable		
126	573314	Venturi (exhaust/manifold header)		
201	997267	Case panel (side)		
202	998428	Case door insert		
203	997721	Case panel (front)		

ER2002210031601001

PART.	CODE	DESCRIPTION	REF.	NOTE
311	569281	Burner jet 1.25mm full kit (NG)		12
312	569282	Burner jet 0.72 full kit (LPG)		12

NOTE	DESCRIPTION
11	Not supplied as a spare part
12	Not illustrated